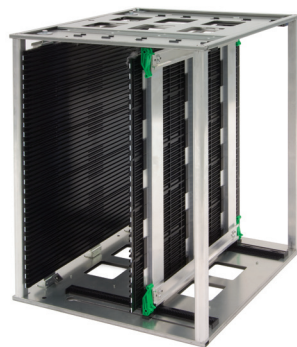


# MLU I

## Single Magazine Line Unloader



- Reliable PCB line unloader
- Ideal for fast running lines
- Expandable with magazine changer
- Silent operation
- Lean design - optimized footprint
- User friendly interface - Color touchscreen
- Easy configuration
- Integrated diagnostic tool
- Welded steel frame



# MLU I

## Single Magazine Line Unloader

PCB Specification	
PCB Width:	80 - 310 mm
PCB Length:	50 - 387 mm
PCB Ratio:	0,8 (length $\geq$ 0,8 x width)
PCB Thickness:	0,8 - 4 mm
Component height (top side):	max. 100 mm
Component height (bottom side):	max. 25 mm
PCB Edge support:	2,0 - 4,5 mm
PCB Weight:	2,5 kg
Process Specification	
Standard magazine type:	CAB 703
Number of magazines:	1
Pitch:	Adjustable in steps of 10 mm
Technical Specification	
PCB Exchange time:	9 sec
PCB Transport speed:	100 - 800 mm/sec
Transport height:	870 - 990 mm
Transport direction:	L $\Rightarrow$ R, R $\Rightarrow$ L (to be specified at time of order)
Protection screens:	ESD Safe
Controller:	Omron
Energy requirements:	230 $\pm$ 10%, 50Hz - 110V $\pm$ 10%, 60 Hz - 400 VA
Compressed air:	6 bar - 20% bar, 40 l/min, according to DIN ISO 8573 3.4.5
Color:	RAL 7035 ESD
Dimensions (L x D x H):	1.300 x 690 x 1.840 mm
Weight:	240 kg
Interface:	SMEMA
Standards:	CE Approved
Options	
Automatic width adjustment	
Bus system (RS 232 / RS 485, Ethernet)	
SMEMA specific (Siemens, SMPI, Fuji, Panasonic, Sanyo)	
Other magazine types (Mikiplastic)	
Different transport heights (990 - 1.100 mm)	
PCB Thickness: 0,4 mm	

■ IPTE  
Geleenlaan 5  
3600 Genk  
Belgium  
Tel: +32 (0)89 623 000  
Fax: +32 (0)89 623 010  
Email: info@ipte.com

■ IPTE Sales  
Detailed information on our  
worldwide sales offices can  
be found on our website at  
[www.ipte.com](http://www.ipte.com)

[WWW.IPTE.COM](http://WWW.IPTE.COM)