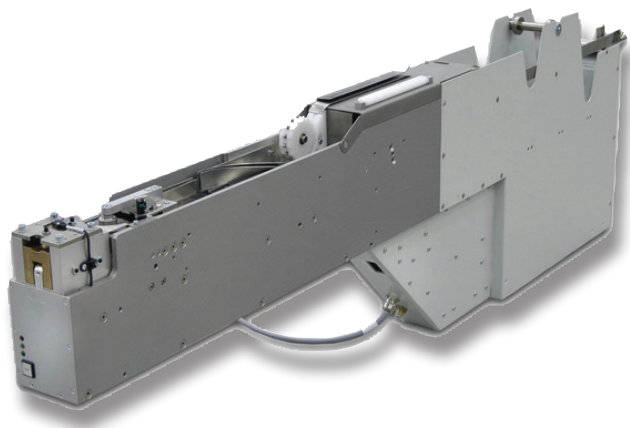
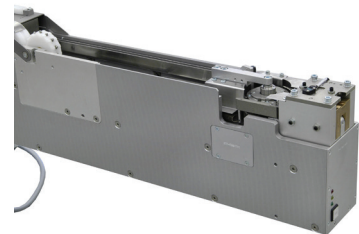
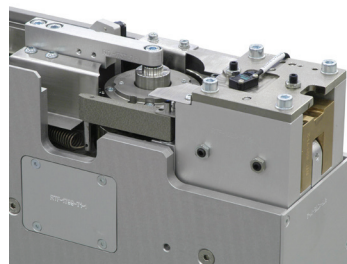


RTF Radial Tape Feeder



- Efficient and productive feeding
- Integrated lead cutting unit
- Wide component range
- Easy readjustment
- Excellent price-performance ratio
- Intelligent communication with placement system
- Easy user interface
- Fits all OFP-equipment



RTF

Radial Tape Feeder

| Process Specification | |
|---|--|
| Cycle Time per Component: | 0,8 - 2,5 sec/component |
| Tape Norm: | DIN IEC 286 and EIA296 |
| Tape Height: | 17,5 - 19 mm (tape and comp max 56 mm) |
| Component Dimensions: | Ø 3 - 12 mm, Height 3 - 29 mm |
| Standard Grid: | 3,5 - 12 mm |
| Leads Diameter: | 0,4 - 1 mm Round, Oval or Square |
| Lead Cutting: | 45° / 60° |
| Reel Diameter: | Max. 400 mm or optional Ammo Pack |
| Pick Position Repeatability: | ± 50 µ |
| Technical Specification | |
| Electrical Power: | 24 V |
| Compressed air: | 6 - 20% bar, according to DIN ISO 8573 3.4.5 |
| Color: | Blank Anodized |
| Outside Dimension (L x D x H): | 90 x 1.375 x 432 mm |
| Interface: | IPTE |
| Standards: | CE |
| Options | |
| Multi step tool (e.g. pre-forming) | |
| Tape cutter | |
| Polarity check | |
| 'Feeder almost empty' detection | |
| Splice tool | |
| Reel clamping system | |
| Reel tape separator | |
| Mechanical interface for EasyMounter | |
| Mechanical and electrical interface for EasyMounter | |
| Splice tool for radial tape DIN 60286-2 | |
| Splice stickers (1000 pcs) | |
| Software download cable | |

■ IPTE
Geleenlaan 5
3600 Genk
Belgium
Tel: +32 (0)89 623 000
Fax: +32 (0)89 623 010
Email: info@ipte.com

■ IPTE Sales
Detailed information on our
worldwide sales offices can
be found on our website at
www.ipite.com

WWW.IPTE.COM