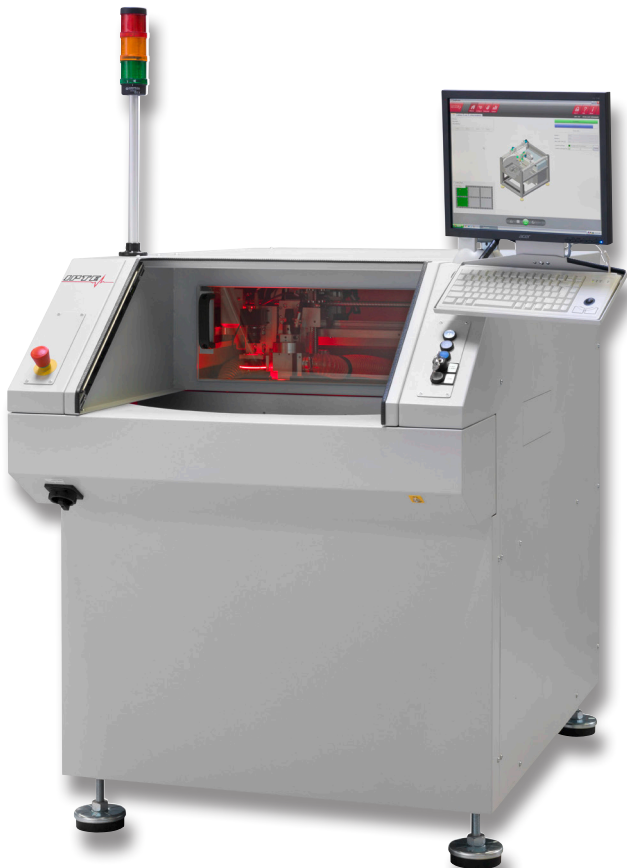
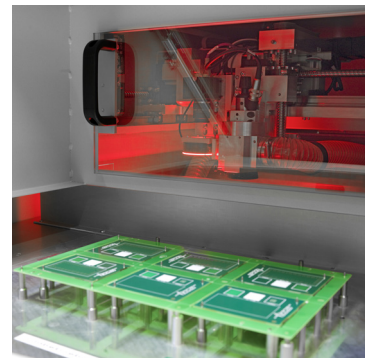
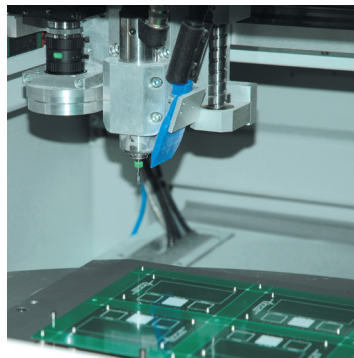


# EasyRouter Depaneling System



- High speed, low stress separating process
- Top side routing
- Programmable servo motors
- TS1 HMI
- Router bit breakage detection and life monitoring
- Loading/Unloading during depaneling process
- Two position turntable
- Camera assisted teaching
- Light curtain quick access



# EasyRouter Depaneling System

PCB Specification	
Working area (L x W):	450 x 380 mm
	410 x 370 mm (Top suction)
Component height (top side):	30 mm (top side suction 8 mm)
Component height (bottom side):	30 mm
Process Specification	
X-Y Actuation:	Servo
Z Actuation:	Servo
Separating Accuracy:	± 0,15 mm
Cutting Speed (Routing):	Routing: up to 60 mm/sec
Router bit exchange:	Manual
Router bit diameters:	0,8 - 3,1 mm
Dust exhaustion:	Bottom side with external industrial vacuum cleaner
Technical Specification	
Protection screens:	ESD
Energy requirements:	3 x 208/400 V AC, 50/60 Hz, 5 kVA
Compressed air:	6 bar, min 100 NL/min, according to DIN ISO 8573 3.4.5
Color:	RAL 7035 ESD Safe
Dimensions (L x D x H):	1.080 x 1.630 x 1.300 mm (without signal tower)
Weight:	ca 650 kg
Interface:	TS1
Standards:	CE
Options	
Fixture detection	
Traceability software (CamX)	
1D Bar code or 2D Matrix reader	
4 bit or 8 bit fixture identification	

■ IPTE  
Geleenlaan 5  
3600 Genk  
Belgium  
Tel: +32 (0)89 623 000  
Fax: +32 (0)89 623 010  
Email: info@ipte.com

■ IPTE Sales  
Detailed information on our  
worldwide sales offices can  
be found on our website at  
[www.ipte.com](http://www.ipte.com)

[WWW.IPTE.COM](http://WWW.IPTE.COM)