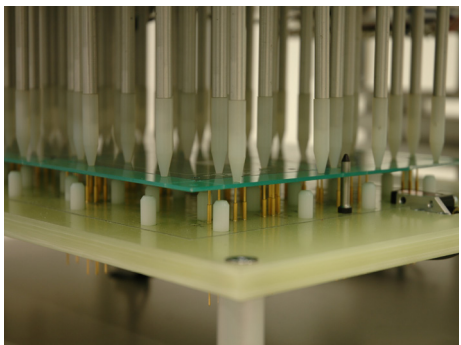
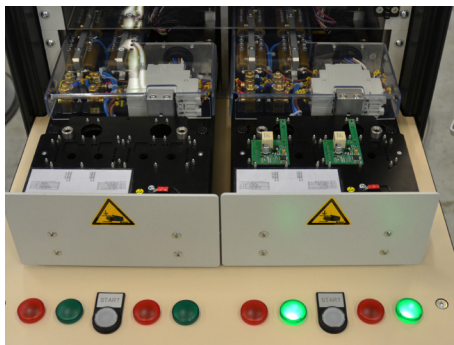
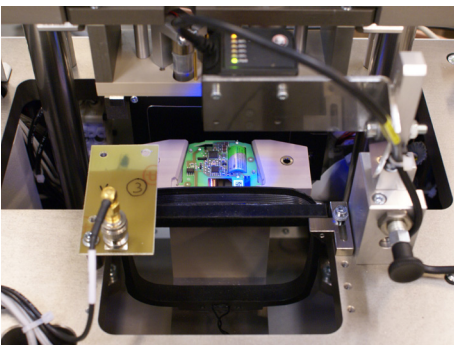
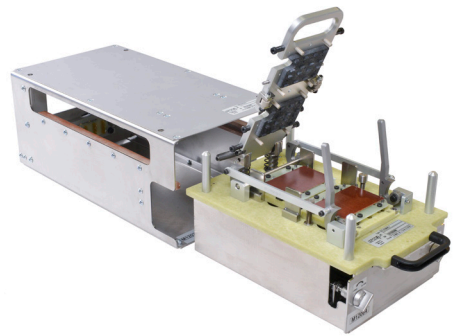
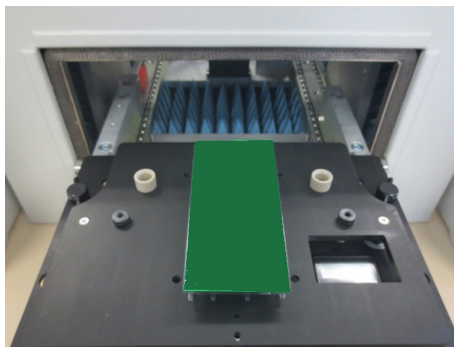


TEST HANDLERS



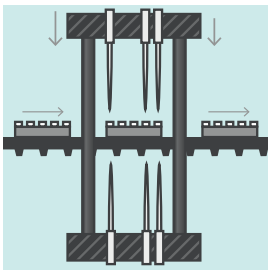
TEST HANDLERS
TEST INSERTS
TEST SYSTEMS
TEST APPLICATIONS
TEST FIXTURES



Test Handling

IPTE Test Handling systems are designed to facilitate the automated testing of PCBs in an in-line or stand alone process. The handlers are economical in footprint and cost, give an excellent return on investment and embrace all the latest concepts in lean design.

Each welded steel framed unit is fully equipped with its own control and diagnostics via a user friendly interface. The units are fully compatible with other SMEMA units and other standard equipment in electronics manufacturing lines to ensure a truly 'plug and play' assembly line strategy. Fixture exchange can be carried out in seconds to ensure minimum downtime.



IHT II - In-line Hot Tester



- Fully controlled test temperature at PCB level
- 4 heating zones and heated test zone
- 50°C to 125°C temperature
- SMEMA compatible
- Optional dual lane

Multi Functional Testhandlers

MFT 19"



- Automatic in-line ICT and FT test handler
- Single stage, dual stage and double side contacting
- Optimized footprint for parallel testing
- Easy fixture exchange
- Flexible in-line solutions
- 3,5 seconds exchange time

MFT 19" Tester Integrated



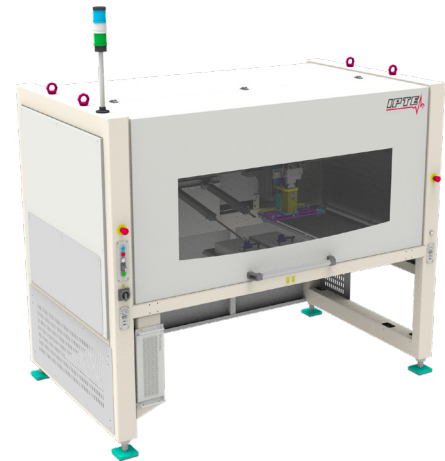
- Automatic in-line test handler
- Acculogic Scorpion test platform
- Aeroflex 5200/530x/5800 test platform
- CheckSum test platform
- DigitalTest MTS300 test platform
- Dr. Eschke CT3XX test platform
- elowerk test platform
- Keysight i1000 test platform
- SPEA 3030 test platform
- Teradyne TSR128 /TSi05x-102 test platform

MFT Bridge



- Full automatic in-line test handler
- Aeroflex 44xx test platform
- Keysight 3070i, series II and series 3 test platform
- Teradyne Z18xx, Spectrum 885x test platform
- Single stage, dual stage and double side contacting
- Optional dual lane

MFT Bridge pick&place



- Fully automatic Pick&Place in-line handler
- Accepts manual vacuum fixtures
- Fixture compatible with off-line and in-line use
- Single well or dual well fixtures
- Suitable for all manually operated test stations: Aeroflex, CheckSum, DigitalTest, Dr. Eschke, Keysight, Spea, Teradyne

Test handlers

ETH - Easy Test Handler



- Automatic in-line test and programming
- Optional pass-through in contacting position
- Functional test or Keysight DTS (mini ICT), Checksum or Programming (Promik, FlashRunner,...)
- Economical fixture
- Single and dual side contacting
- Easy fixture exchange
- 6 seconds exchange time

MTH - MultiTest Handler



- Automatic in-line test and programming
- Up To 8 Fixtures
- Optional 16 half size test positions
- Single and dual side contacting
- Easy fixture exchange
- Optimized footprint
- Optional second conveyor in lift

Turntable



- Rotation table with 2 or 4 positions
- Optimized footprint
- Cost optimized design
- Easy fixture exchange
- Based in 19" cabinet

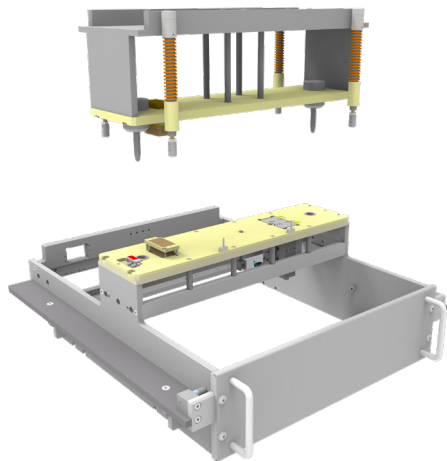
STH - Shuttle Test Handler



- Manual test and programming
- Economical fixture
- Single and dual side contacting
- Optimized footprint
- 19" Mounting space
- Easy fixture exchange
- Odd-form PCBs

Fixtures

In-Line fixture



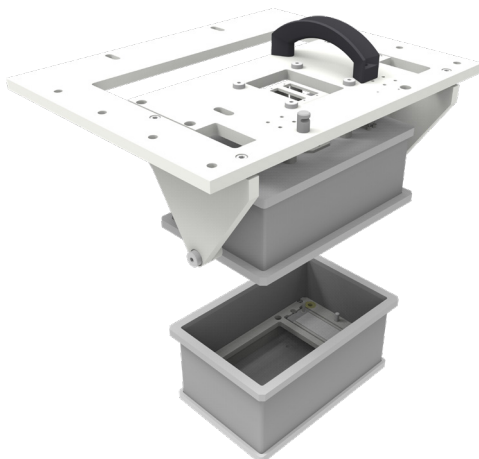
- Drawer type fixture
- Bottom and/or top side contacting
- Board positioning and orientation sensors
- Space for additional DUT electronics

Manual fixture



- Manual operated Fixture
- Suitable for PCB or final product testing
- Manual and pneumatical press down
- Optional removeable needlebed

Easy “Cage of Faraday”



- RF shielded box
- Manual or semi automatic test of RF products
- For placement in production lines
- Diversity DUT types
- Suitable for high throughput

Test handler specification

	STH	MFT 19"	MFT Bridge
Dimensions (L x D x H):	840 x 2.050 x 1.990 mm	600 x 1.470 x 1.960 mm	2.400 x 1.370 x 1.960 mm
PCB Exchange Time:	Typical 8 sec	Typical 3,5 sec	Typical 5 sec
Edge Support:	na	2,0 - 4,5 mm	2,0 - 4,5 mm
Press Down Force:	1.500 N	5.000 - 15.000 N	5.000 - 10.000 N
Transport Speed:	na	max. 800 mm/sec	max. 800 mm/sec
Transport Height:	na	940 + 25 mm	940 + 25 mm
Width Independent Fixture:	na	Standard	Standard
Bypass Conveyor:	na	Optional	Optional
Bottom Side Contacting:	YES	YES	YES
Top Side Contacting:	YES	YES	YES
Dual Stage Contacting:	NO	YES	YES
Cage of Faraday:	na	NO	NO
19" Build-in Space:	12 HE	12HE	none
Extension Rack:	na	TRM (16 HE)	none
PCB Width:	250 mm	254 order 588 mm	254 order 588 mm
PCB Length:	400 mm	460 mm (420 mm top side cont)	560 mm (520 mm top side cont)
PCB Weight:	2,5 kg	2,5 kg	2,5 kg
Top Component Clearance:	80 mm	170 mm	170 mm
Bottom Component Clearance:	25 mm	25,4 mm	25,4 mm
Tester Integration:	Flashing and/or Functional Test	Acculogic, Aeroflex, CheckSum, DigitalTest, Dr. Eschke. elowerk, Keysight, Spea, Teradyne	Aeroflex, Keysight, Teradyne

	ETH	MTH	IHT II
Dimensions (L x D x H):	500 x 850 x 1.500 mm	1.500 x 900 x 1.950 mm	3.900 x 1.235 x 1.960 mm
PCB Exchange Time:	Typical 4,5 seconds	Typical 14 seconds	Typical 4 seconds
Edge Support:	2,0 - 4,5 mm	2,0 - 4,5 mm	2,0 - 4,5 mm
Press Down Force:	1000 N	750 N	3.000 N
Transport Speed:	max. 800 mm/sec	max. 800 mm/sec	max. 460 mm/sec
Transport Height:	930 - 980 mm	940 + 25 mm	940 + 25 mm
Width Independent Fixture:	Standard	Standard	Standard
Bypass Conveyor:	Optional	Optional	NO
Bottom Side Contacting:	YES	YES	YES
Top Side Contacting:	YES	YES	YES
Dual Stage Contacting:	Optional	Optional	NO
Cage of Faraday:	Optional	NO	NO
19" Build-in Space:	12 HE	NO	2 x 12 HE
Extension Rack:	BTR 500	BTR 500	NO
PCB Width:	330 mm	350 mm	261 mm
PCB Length:	400 mm (360 mm top side cont)	400 mm	430 mm (390 mm top side cont)
PCB Weight:	2,5 kg	2,5 kg	2,5 kg
Top Component Clearance:	50,8 mm	25,4 mm	80 mm
Bottom Component Clearance:	25,4 mm	25,4 mm	40 mm
Tester Integration:	FT or Keysight DTS, Checksum, Programming	Flashing / Programming devices	Functional Test