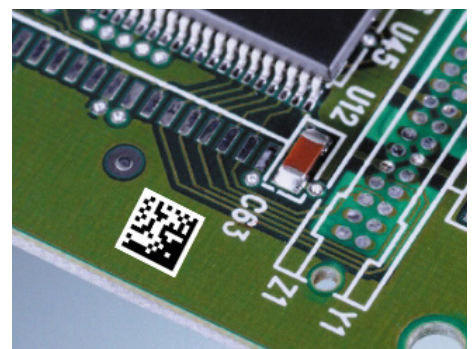
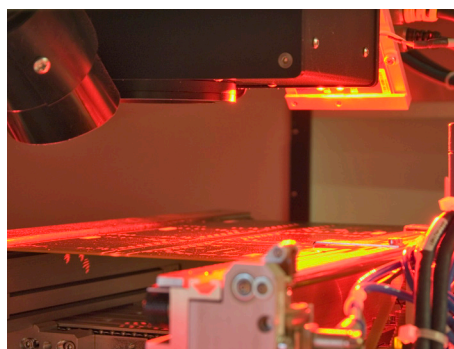
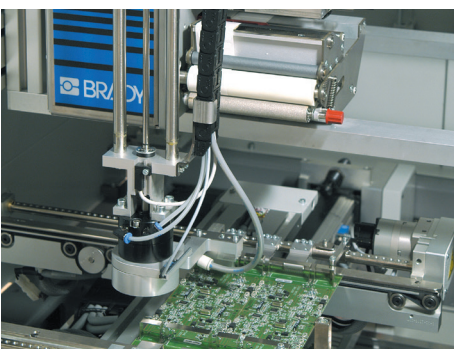
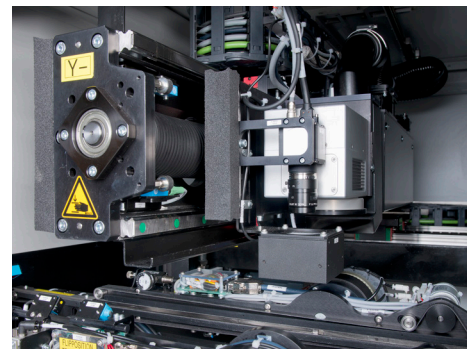
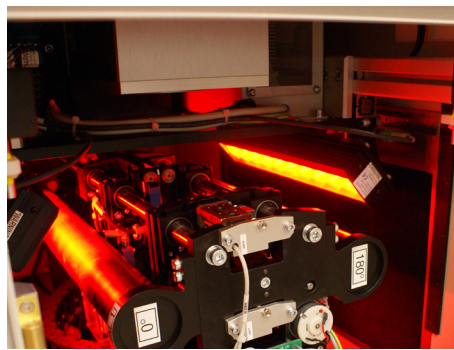
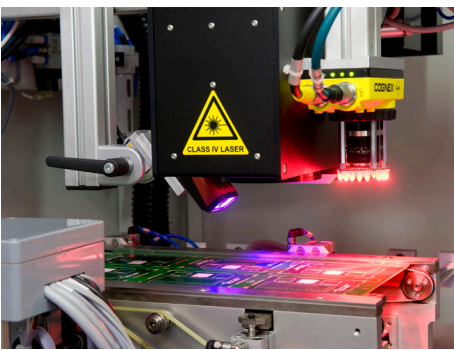


MARKING



MARKING
MOUNTING
SCANNING
SOLDERING
VISION
WELDING
CONVEYING
DEPANELING
FEEDING

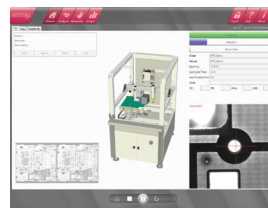
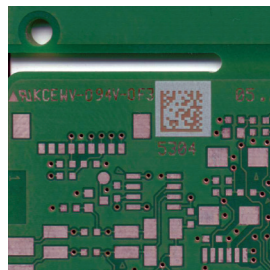
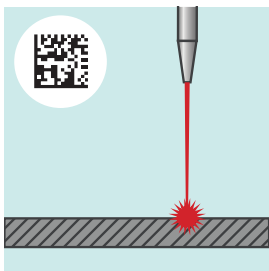


Marking solutions

IPTe's Marking systems are used to enable traceability and identification of parts during manufacturing processes. Being economical in footprint and cost they also embrace all the latest concepts in lean design.

Each welded steel framed unit is fully equipped with its own control and diagnostics and application software accessed via a user friendly interface to ensure easy user configuration. The integrated PCB- or carrier transport ensures fast product to product transfer times.

Fully CE and SMEMA compliant, IPTe markers utilize the latest state of the art CO₂, YAG, YVO and Fiber laser systems.



EasyMarker



- In-line laser marking solution
- Smallest floorspace
- Defined marking field
- Fast PCB exchange time
- Manual adjustable laser unit, fixed conveyor
- Optional Integrated Flip Unit
- 100% Edge free marking

SP-Marker II



- High speed in-line laser marking solution
- Smallest floorspace
- Medium and free programmable marking field
- Fast PCB exchange time
- Fixed position laser unit, fixed conveyor
- Optional Through-The-lens (TTL) Scanning
- Optional Integrated Flip Unit
- 100% Edge free marking

Marking solutions

FlexMarker



- Flexible in-line laser marking solution
- High volume, high mix application
- Large and free programmable marking area
- Fixed position laser unit, movable conveyor

FlexMarker II



- Flexible in-line laser marking solution
- High volume, high mix application
- Large and free programmable marking area
- Fast PCB exchange time
- Movable laser unit, fixed PCB position
- Optional Integrated Flip Unit

FlexLabeler



- Flexible in-line label marking solution
- Medium volume, high mix application
- Large and free programmable labelling area
- Fixed position label unit, movable conveyor

FlexLabeler II



- Flexible in-line label marking solution
- High volume, high mix application
- Large and fixed programmable labelling area

Marking specification

	EasyMarker	FlexLabeler	FlexLabeler II
Dimensions:	500 x 1.000 x 1.620 mm	1.000 x 1.440 x 1.845 mm	850 x 1.600 x 1.500 mm
Weight:	300 kg	570 kg	1040 kg
PCB Edge support:	2,0 - 4,5 mm	2,0 - 4,5 mm	2,0 - 4,5 mm
PCB Thickness minimum:	0,8 mm	0,8 mm	0,8 mm
PCB Thickness maximum:	4,0 mm	4,0 mm	4,0 mm
PCB Length:	50 - 460 mm	50 - 460 mm	50 - 522 mm
PCB Width:	50 - 460 mm	50 - 460 mm	50 - 522 mm
PCB Weight:	2,5 kg	2,5 kg	2,5 kg
PCB Top clearance:	25 mm	80 mm	40 mm
PCB Bottom clearance:	25 mm	50 mm	25 mm (40 mm with flip unit)
Field of marking	335 x 360 mm	460 x 460 mm	522 x 522 mm
Field of view (default):	100 x 100 mm	N/A	100 x 100 mm
Transport:	Fixed	XY servo driven	Fixed
Position marking unit:	Manual adjustable	Fixed	XY servo driven
Verify@Mark (1D, 2D)	Option	Option	Option
Vision (fiducial, fail, orientation)	Option	Option	Option
Flip unit integrated:	Option	N/A	Option

	SP-Marker II	FlexMarker	FlexMarker II
Dimensions:	500 x 1.090 x 1.500 mm	1.000 x 1.440 x 1.845 mm	850 x 1.600 x 1.500 mm
Weight:	300 kg	570 kg	1040 kg
PCB Edge support:	2,0 - 4,5 mm	2,0 - 4,5 mm	2,0 - 4,5 mm
PCB Thickness minimum:	0,8 mm	0,8 mm	0,8 mm
PCB Thickness maximum:	4,0 mm	4,0 mm	4,0 mm
PCB Length:	50 - 435 mm	50 - 460 mm	50 - 522 mm
PCB Width:	50 - 460 mm	50 - 460 mm	50 - 522 mm
PCB Weight:	2,5 kg	2,5 kg	2,5 kg
PCB Top clearance:	25 mm	80 mm	40 mm
PCB Bottom clearance:	25 mm	25 mm	25 mm (40 mm with flip unit)
Field of marking	380 x 380 mm	460 x 460 mm	522 x 522 mm
Field of view (default):	380 x 380 mm	70 x 70 mm	100 x 100 mm
Transport:	Fixed	XY servo driven	Fixed
Position marking unit:	Fixed	Fixed	XY servo driven
Verify@Mark (1D, 2D)	Option	Option	Option
Vision (fiducial, fail, orientation)	Option	Option	Option
Flip unit integrated:	Option	N/A	Option